



First Quarter 2022 Earnings Call

BRINGING THE FUTURE
FASTER

Forward-Looking Statements



BRINGING THE FUTURE
FASTER

This presentation information contains forward-looking statements within the meaning of the Private Securities Litigation Reform Act of 1995. These forward-looking statements involve certain risks and uncertainties that could cause actual results to differ materially from those expressed or implied by these statements. These risks and uncertainties include factors detailed in the reports we file with the SEC, including those described under “Risk Factors” in our most recent Annual Report on Form 10-K and our Quarterly Reports on Form 10-Q. These forward-looking statements speak only as of the date of this communication. We expressly disclaim any obligation or undertaking to disseminate any updates or revisions to any forward-looking statement contained herein to reflect any change in our expectations with regard thereto or any change in events, conditions or circumstances on which any such statement is based.

It should also be noted that this information contains certain financial measures, including Adjusted EBITDA, Adjusted Earnings per Share, Adjusted Free Cash Flow, Net Leverage Ratio and Liquidity that are not required by, or presented in accordance with, accounting principles generally accepted in the United States, or GAAP. These measures are presented here to provide additional useful measurements to review our operations, provide transparency to investors and enable period-to-period comparability of financial performance. A description of non-GAAP financial measures that we use to evaluate our operations and financial performance, and reconciliation of these non-GAAP financial measures to the most directly comparable financial measures calculated and reported in accordance with GAAP, can be found in the appendix under “Reconciliation of Non-GAAP Measures.”

1Q 2022 AAM Financial Highlights



BRINGING THE FUTURE
FASTER

>\$1.4B

Quarterly
Sales

\$196.1M

First Quarter
Adjusted EBITDA

\$53.9M

Adjusted Free
Cash Flow

AAM Delivers Solid Results In A Difficult Operating Environment

Business Update



BRINGING THE FUTURE
FASTER



Tekfor

AAM entered into a definitive agreement to acquire Tekfor Group for an enterprise value of €125 million. This acquisition provides significant synergy potential, diversifies AAM's geographic and customer sales mix and increases AAM's electrification product portfolio.

Geely

AAM recently won a significant program with Geely Auto. AAM plans to supply independent front and rear drive axles for a premium vehicle program which includes plug-in hybrid applications.

PACE Award Finalist

AAM's P3 2-speed Electric Drive Technology is the first volume production application of a P3, 2-speed architecture in a drive axle. The unit also incorporates an electronic limited slip differential (eLSD), another industry first for an electric drive unit.

PACEpilot Award Finalist

AAM's P4 Integrated 3-In-1 Wheel-End Electric Drive Unit (EDU) includes a motor, gearbox and inverter in one single compact and lightweight package. The EDU can be used in wheel end, eBeam and other applications for cars, light trucks, last mile delivery and heavy-duty truck platforms.

Sustainability



BRINGING THE FUTURE
FASTER

2021 Report

- New sustainability report was published in April 2022.
- Our vision is to power a sustainable future while providing value to our stakeholders.
- The mission is to advance global mobility through innovative technologies and sustainable solutions.
- Our focus is to deliver power and build a safer, greener and sustainable future for our associates, customers, communities and the environment.



ENVIRONMENTAL

SOCIAL

PRODUCT

SUPPLY CHAIN

GOVERNANCE

Committed To Net Zero Carbon Emissions



BRINGING THE FUTURE
FASTER

New Targets

- We are focused on achieving profitable growth and doing so sustainably.
- We initially set goals to reduce GHG emissions, energy usage, and water consumption by 5% by the end of 2024.
- AAM achieved those goals ahead of schedule.
- We established new targets to guide AAM's global environmental sustainability initiatives.
- We applied for Science Based Targets initiative (SBTi) accreditation of our climate goals.



Scope 1, 2 & 3 Emissions

ACHIEVE NET ZERO CARBON BY 2040



Energy

100% RENEWABLE ENERGY SOURCING
IN THE U.S. BY 2025



Water

ZERO INCIDENTS OF WATER CONTAMINATION
AND WATER SCARCITY IN WATERSHEDS
WHERE WE OPERATE



Waste

ZERO-WASTE-TO-LANDFILL STATUS
FOR ALL FACILITIES BY 2035

ENVIRONMENTAL

SOCIAL

PRODUCT

SUPPLY CHAIN

GOVERNANCE



2022 Financial Targets

Full Year Sales	\$5.6 to \$5.8 billion
Adjusted EBITDA	\$785 to \$830 million
Adjusted Free Cash Flow	\$300 to \$350 million

- These targets are based on North American light vehicle production range of 14.3 – 14.7 million units, current customer production and launch schedules and business environment
- Adjusted Free Cash Flow target assumes capital spending in the range of 3.5% - 4.0% of sales
- AAM expects restructuring and acquisition-related cash payments to be between \$20 and \$30 million

1Q Financial Results



BRINGING THE FUTURE
FASTER

	Three Months Ended March 31,		Difference
	2022	2021	
	(dollars in millions, except per share data)		
Net sales	\$ 1,436.2	\$ 1,425.1	\$ 11.1
Gross profit	\$ 186.8	\$ 227.1	\$ (40.3)
Gross margin	13.0%	15.9%	-2.9%
Selling, general and administrative expenses	\$ 86.1	\$ 90.0	\$ (3.9)
SG&A as a % of sales	6.0%	6.3%	-0.3%
Amortization of intangible assets	\$ 21.5	\$ 21.5	\$ -
Restructuring and acquisition-related costs	\$ 8.9	\$ 17.5	\$ (8.6)
Debt refinancing and redemption costs	\$ (5.6)	\$ (1.1)	\$ (4.5)
Unrealized loss on equity securities	\$ (18.0)	\$ -	\$ (18.0)
Other income (expense), net	\$ (1.0)	\$ 1.2	\$ (2.2)
Adjusted EBITDA	\$ 196.1	\$ 262.9	\$ (66.8)
Adjusted EBITDA margin	13.7%	18.4%	-4.7%
Net interest expense	\$ (41.7)	\$ (48.2)	\$ 6.5
Income tax expense	\$ 3.0	\$ 8.8	\$ (5.8)
Effective income tax rate	75.0%	18.6%	56.4%
Net income	\$ 1.0	\$ 38.6	\$ (37.6)
Diluted earnings per share	\$ 0.01	\$ 0.33	\$ (0.32)
Adjusted EPS	\$ 0.19	\$ 0.57	\$ (0.38)

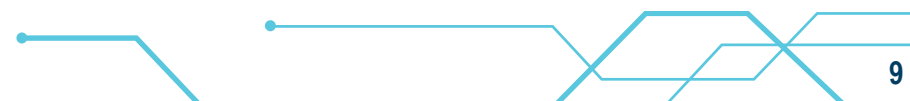
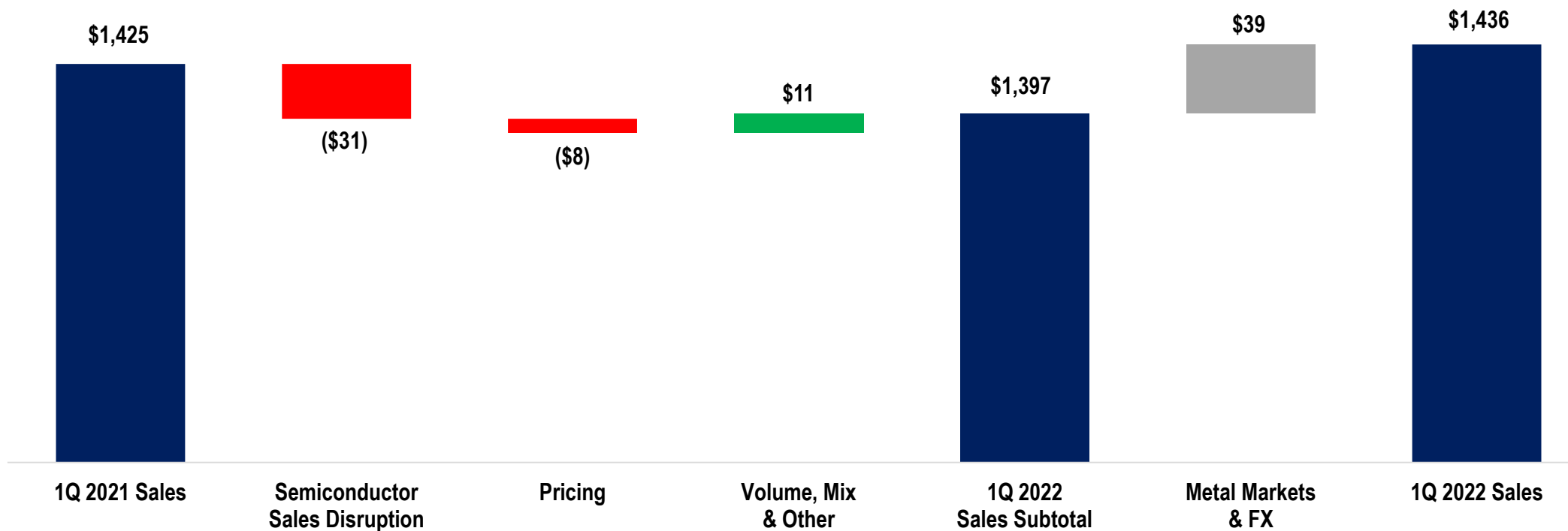
Note: Adjusted earnings per share are based on weighted average diluted shares outstanding of 119.3 million and 118.3 million for the three months ended on March 31, 2022 and 2021, respectively.

2022 Q1 Revenue Walk (Yr/Yr)



BRINGING THE FUTURE
FASTER

\$ in millions

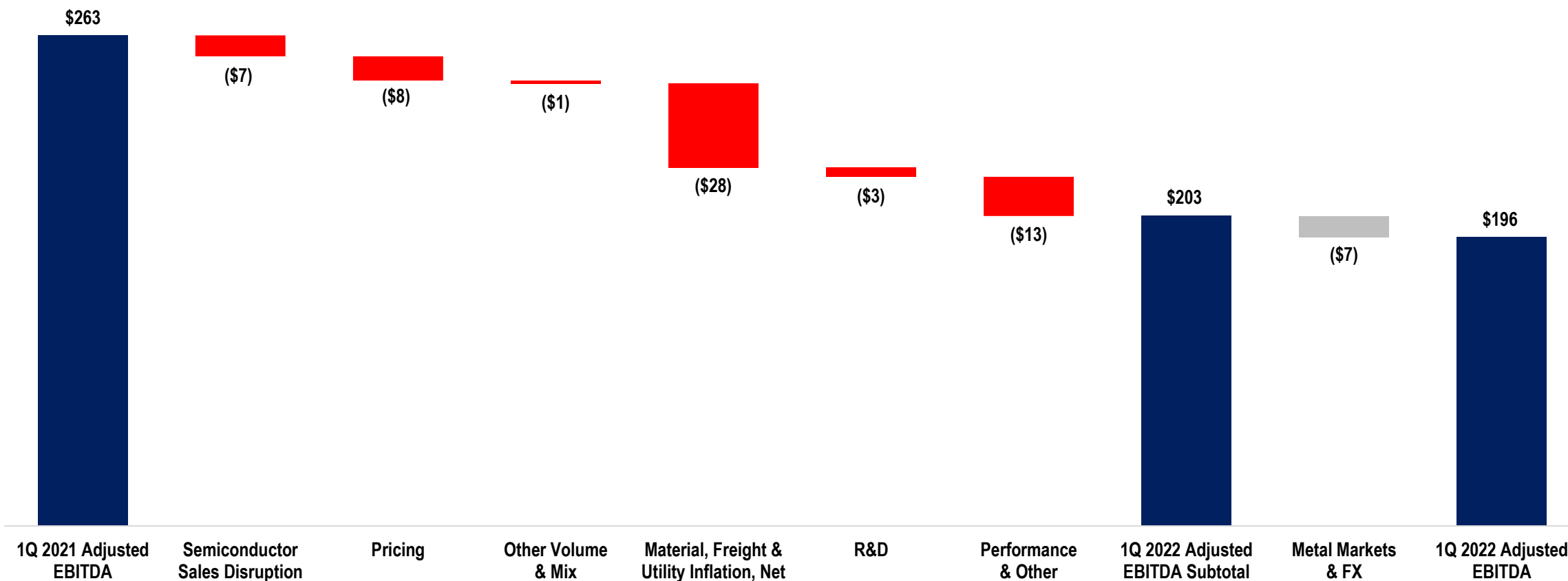


2022 Q1 Adjusted EBITDA Walk



BRINGING THE FUTURE
FASTER

\$ in millions



Note: For definitions and reconciliations of non-GAAP financial measures, please see the attached appendix.

Adjusted Free Cash Flow and Credit Profile

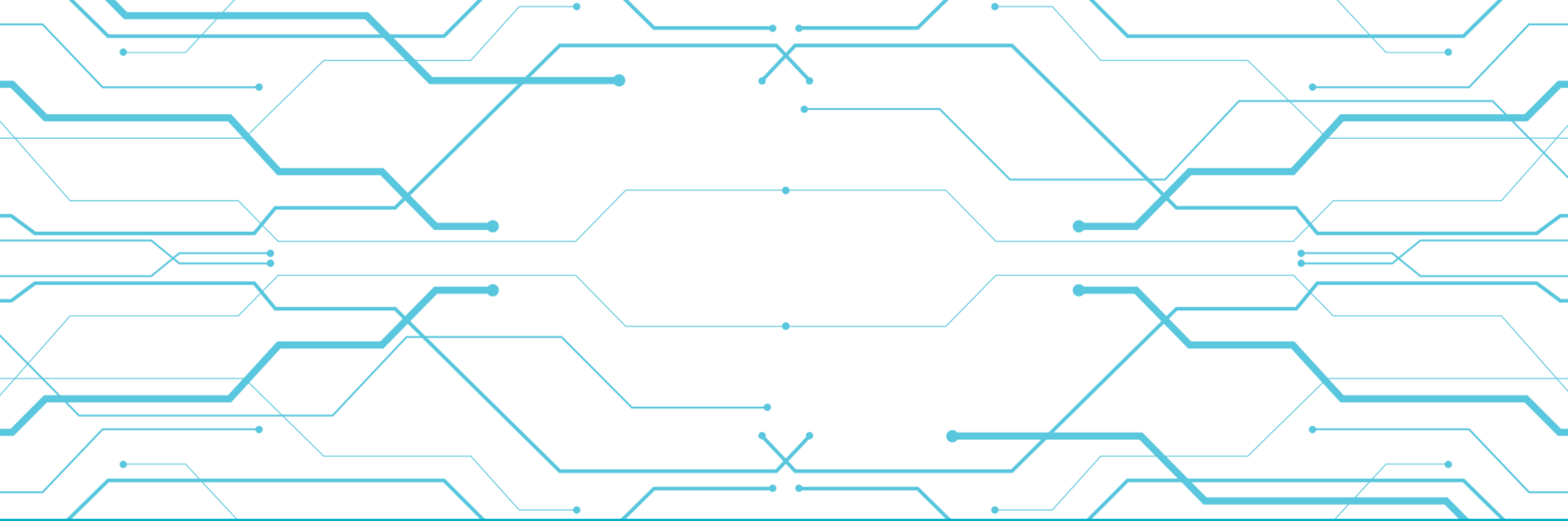


BRINGING THE FUTURE
FASTER

Cash Flow and Debt Metrics	1Q 2022
Adjusted Free Cash Flow	\$54 million
Net Debt	\$2.6 billion
Net Leverage Ratio	3.3x
Liquidity	~\$1.5 billion

AAM Maintains Strong Liquidity

Note: For definitions and reconciliations of non-GAAP financial measures, please see the attached appendix.



Supplemental Data



BRINGING THE FUTURE
FASTER

Reconciliation of Non-GAAP Measures



BRINGING THE FUTURE
FASTER

In addition to the results reported in accordance with accounting principles generally accepted in the United States of America (GAAP) included within this presentation, we have provided certain information, which includes non-GAAP financial measures. Such information is reconciled to its closest GAAP measure in accordance with Securities and Exchange Commission rules and is included in the following slides.

Certain of the forward-looking financial measures included in this earnings release are provided on a non-GAAP basis. A reconciliation of non-GAAP forward-looking financial measures to the most directly comparable forward-looking financial measures calculated and presented in accordance with GAAP has been provided. The amounts in these reconciliations are based on our current estimates and actual results may differ materially from these forward-looking estimates for many reasons, including potential event driven transactional and other non-core operating items and their related effects in any future period, the magnitude of which may be significant.



EBITDA and Adjusted EBITDA Reconciliation
(\$ in millions)

	Three Months Ended	
	March 31,	
	2022	2021
Net income	\$ 1.0	\$ 38.6
Interest expense	44.7	51.1
Income tax expense	3.0	8.8
Depreciation and amortization	120.4	142.0
EBITDA	169.1	240.5
Restructuring and acquisition-related costs	8.9	17.5
Debt refinancing and redemption costs	5.6	1.1
Loss on sale of business	-	2.6
Unrealized loss on equity securities	18.0	-
Non-recurring items:		
Malvern fire charges, net of recoveries	(5.5)	1.2
Adjusted EBITDA	\$ 196.1	\$ 262.9
Sales	1,436.2	1,425.1
as a % of net sales	13.7%	18.4%

Supplemental Data



BRINGING THE FUTURE
FASTER

EBITDA and Adjusted EBITDA for the Trailing Twelve Months Ended March 31, 2022 (\$ in millions)

	Quarter Ended				Trailing Twelve
	June 30, 2021	September 30, 2021	December 31, 2021	March 31, 2022	Months Ended March 31, 2022
Net income (loss)	\$ 16.0	\$ (2.4)	\$ (46.3)	\$ 1.0	\$ (31.7)
Interest expense	49.9	49.7	44.5	44.7	188.8
Income tax expense (benefit)	2.4	(13.6)	(2.3)	3.0	(10.5)
Depreciation and amortization	143.6	135.6	123.1	120.4	522.7
EBITDA	211.9	169.3	119.0	169.1	669.3
Restructuring and acquisition-related costs	15.9	7.4	8.6	8.9	40.8
Debt refinancing and redemption costs	1.3	31.6		5.6	38.5
Pension settlement			42.3		42.3
Loss on sale of business	0.1				0.1
Unrealized loss (gain) on equity securities		(19.4)	(5.0)	18.0	(6.4)
Non-recurring items:					
Malvern fire charges, net of recoveries	(6.6)	(5.7)	(0.3)	(5.5)	(18.1)
Adjusted EBITDA	\$ 222.6	\$ 183.2	\$ 164.6	\$ 196.1	\$ 766.5
Sales	1,283.3	1,213.1	1,235.1	1,436.2	5,167.7
as a % of net sales	17.3%	15.1%	13.3%	13.7%	14.8%



Adjusted Earnings Per Share Reconciliation

	Three Months Ended	
	March 31,	
	2022	2021
Diluted earnings per share	\$ 0.01	\$ 0.33
Restructuring and acquisition-related costs	0.07	0.15
Debt refinancing and redemption costs	0.05	0.01
Loss on sale of business	-	0.02
Unrealized loss on equity securities	0.15	-
Accelerated depreciation*	-	0.09
Non-recurring items:		
Malvern fire charges, net of recoveries	(0.05)	0.01
Tax effect of adjustments	(0.04)	(0.04)
Adjusted earnings per share	<u>\$ 0.19</u>	<u>\$ 0.57</u>

*Please refer to definition of Non-GAAP measures.



Free Cash Flow and Adjusted Free Cash Flow Reconciliation (\$ in millions)

	Three Months Ended March 31,	
	2022	2021
Net cash provided by operating activities	\$ 68.5	\$ 179.1
Capital expenditures net of proceeds from the sale of property, plant and equipment	(24.4)	(39.6)
Free cash flow	44.1	139.5
Cash payments for restructuring and acquisition-related costs	8.4	23.4
Cash payments related to the Malvern fire net of recoveries	1.4	11.2
Adjusted free cash flow	<u>\$ 53.9</u>	<u>\$ 174.1</u>



Net Debt and Net Leverage Ratio (\$ in millions)

	March 31, 2022
Current portion of long term debt	\$ 21.0
Long-term debt, net	3,062.0
Total debt, net	3,083.0
Less: Cash and cash equivalents	529.9
Net debt at end of period	2,553.1
Adjusted LTM EBITDA	\$ 766.5
Net Leverage Ratio	3.3x



Segment Financial Information
(\$ in millions)

	Three Months Ended	
	March 31,	
	2022	2021
Segment Sales		
Driveline	\$ 1,061.8	\$ 1,026.1
Metal Forming	481.8	489.3
Total Sales	1,543.6	1,515.4
Intersegment Sales	(107.4)	(90.3)
Net External Sales	<u>\$ 1,436.2</u>	<u>\$ 1,425.1</u>
Segment Adjusted EBITDA		
Driveline	\$ 132.5	\$ 170.5
Metal Forming	63.6	92.4
Total Segment Adjusted EBITDA	<u>\$ 196.1</u>	<u>\$ 262.9</u>

Supplemental Data



BRINGING THE FUTURE
FASTER

	Adjusted EBITDA	
	Low End	High End
	<i>(in millions)</i>	
Net income	\$ 75	\$ 110
Interest expense	175	175
Income tax expense	20	30
Depreciation and amortization	490	490
Full year 2022 targeted EBITDA	760	805
Restructuring and acquisition-related costs	25	25
Full year 2022 targeted Adjusted EBITDA	<u>\$ 785</u>	<u>\$ 830</u>

	Adjusted Free Cash Flow	
	Low End	High End
	<i>(in millions)</i>	
Net cash provided by operating activities	\$ 490	\$ 540
Capital expenditures net of proceeds from the sale of property, plant and equipment	(215)	(215)
Full year 2022 targeted Free Cash Flow	275	325
Cash payments for restructuring and acquisition-related costs	25	25
Full year 2022 targeted Adjusted Free Cash	<u>\$ 300</u>	<u>\$ 350</u>

Definition of Non-GAAP Measures



BRINGING THE FUTURE
FASTER

EBITDA and Adjusted EBITDA

We define EBITDA to be earnings before interest expense, income taxes, depreciation and amortization. Adjusted EBITDA is defined as EBITDA excluding the impact of restructuring and acquisition-related costs, debt refinancing and redemption costs, loss on sale of a business, impairment charges, pension settlements, unrealized gains or losses on equity securities and non-recurring items. We believe that EBITDA and Adjusted EBITDA are meaningful measures of performance as they are commonly utilized by management and investors to analyze operating performance and entity valuation. Our management, the investment community and the banking institutions routinely use EBITDA and Adjusted EBITDA, together with other measures, to measure our operating performance relative to other Tier 1 automotive suppliers. We also use Segment Adjusted EBITDA as the measure of earnings to assess the performance of each segment and determine the resources to be allocated to the segments. EBITDA and Adjusted EBITDA are also key metrics used in our calculation of incentive compensation. EBITDA and Adjusted EBITDA should not be construed as income from operations, net income or cash flow from operating activities as determined under GAAP. Other companies may calculate EBITDA and Adjusted EBITDA differently.

Adjusted Earnings Per Share

We define Adjusted earnings per share to be diluted earnings per share excluding the impact of restructuring and acquisition-related costs, debt refinancing and redemption costs, loss on sale of a business, impairment charges, pension settlements, certain accelerated depreciation, unrealized gains or losses on equity securities and non-recurring items, including the tax effect thereon. We believe Adjusted earnings per share is a meaningful measure as it is commonly utilized by management and investors in assessing ongoing financial performance that provides improved comparability between periods through the exclusion of certain items that management believes are not indicative of core operating performance and which may obscure underlying business results and trends. Other companies may calculate Adjusted earnings per share differently.

Free Cash Flow and Adjusted Free Cash Flow

We define free cash flow to be net cash provided by operating activities less capital expenditures net of proceeds from the sale of property, plant and equipment. Adjusted free cash flow is defined as free cash flow excluding the impact of cash payments for restructuring and acquisition-related costs and cash payments related to the Malvern fire, including payments for capital expenditures, net of recoveries. We believe free cash flow and Adjusted free cash flow are meaningful measures as they are commonly utilized by management and investors to assess our ability to generate cash flow from business operations to repay debt and return capital to our stockholders. Free cash flow and Adjusted free cash flow are also key metrics used in our calculation of incentive compensation. Other companies may calculate free cash flow and Adjusted free cash flow differently.

Net Debt and Net Leverage Ratio

We define net debt to be total debt, net less cash and cash equivalents. We define Net Leverage Ratio to be net debt divided by the trailing 12 months of Adjusted EBITDA. We believe that Net Leverage Ratio is a meaningful measure of financial condition as it is commonly used by management, investors and creditors to assess capital structure risk. Other companies may calculate Net Leverage Ratio differently.

Liquidity

We define Liquidity as cash on hand plus amounts available on our revolving credit facility and foreign credit facilities.

US SAAR

We define US SAAR as the seasonally adjusted annual rate of light vehicle sales in the United States.

Accelerated Depreciation

In the first quarter of 2021, one of our largest customers announced their intention to cease production operations in Brazil in 2021 as part of their restructuring actions. As such, we have accelerated depreciation on certain property, plant and equipment beginning in the first quarter of 2021.

